

# BURRELL DRIVE Pipeline Renewal Project

PUBLIC MEETING | SEPT. 19, 2024





# AGENDA

- 1 Introductions**
- 2 Project Overview**
- 3 Questions**
- 4 Closing & Contacts**

Please hold all questions until the end.





# Introductions

**Nick Burnett, Project Manager**

City of Austin | Capital Delivery Services

**Daniel Kankel, Assistant Project Manger**

City of Austin | Capital Delivery Services

**Brandon DeFlon, E.I.T., Engineer**

Austin Water

**Simon Orta, Inspection Supervisor**

City of Austin | Capital Delivery Services

**William Wenzler, Construction Inspector**

City of Austin | Capital Delivery Services

**Ron Grier, Contractor**

Facilities Rehabilitation, Inc.

**Scott Sticker, Public Information**

Austin Water | Public Information Office

**Cynthia Miller, J.D., Public Information**

Austin Water | Public Information Office



# THE BURRELL DRIVE PIPELINE RENEWAL PROJECT

Brandon DeFlon, E.I.T

**AUSTIN WATER**



[AustinTexas.gov/BurrellPipe](https://AustinTexas.gov/BurrellPipe)

# RENEWING AUSTIN



**RENEWING AUSTIN** is an ongoing program to replace water and wastewater mains that have a history of breaks or show signs of deterioration. Updated infrastructure allows Austin Water to provide more reliable service, better protect the environment, and reduce expenditures on repairs.





# Burrell Drive Pipeline Renewal Overview

## About

Austin Water has documented numerous leaks in this area.

Through this project, Austin Water will install new wastewater and water mains.

2,315

LINEAR FEET OF NEW  
**WASTEWATER LINE**

534

LINEAR FEET OF NEW  
**WATER MAIN**





## PROJECT AREA

# Burrell Drive

## WASTEWATER

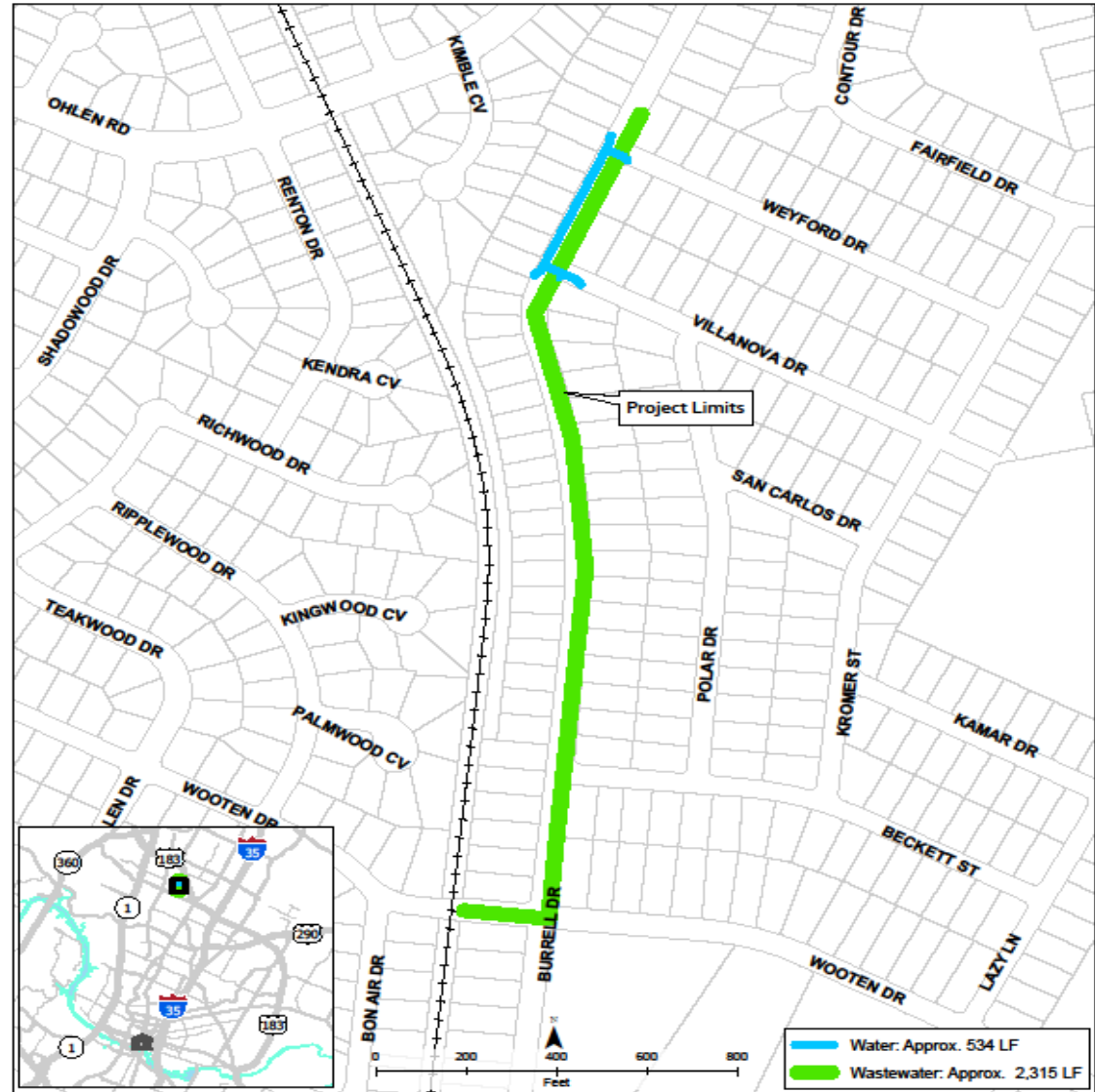
Weyford to Wooten

## WATER

Weyford to Villanova



Project Location: 2231.455 - Burrell Drive Wastewater Improvements



# WHAT TO EXPECT DURING CONSTRUCTION

Nick Burnett, Project Manager  
**CAPITAL DELIVERY SERVICES**



[AustinTexas.gov/BurrellPipe](https://AustinTexas.gov/BurrellPipe)





# Construction

There are several phases to construction, so crews may be **in front of your property** multiple times:

**1. Prep work**

**2. Excavate**

**3. Install new lines**

**4. Install private laterals**

**5. Testing**

**6. Temporary paving**

**7. Modifications**

**8. Restoration  
Final repaving**



# Construction

## Open Cut Construction



- The contractor will cut through asphalt to excavate underground trenches
- Water and wastewater mains go into separate trenches, several feet apart
- Expect heavy construction equipment on-site
- You will always be able to get into your home, but at times your driveway may not be accessible. If you need to get into your driveway, please let William (Inspector) know: 512-567-7220
- During construction, the work site will be left in a safe condition at the end of the workday



# Construction

## Laterals and Repaving



- The contractor will temporarily repair the trenches while construction is ongoing.
- Once a section of wastewater main is installed, the contractor will connect residences to the new main through “private laterals.” Some private laterals need to be moved, and these homes have been sent ROE letters.
- When construction for the entire project is finished and testing is completed, the contractor will schedule a paving company to repave streets impacted by this project.



## Construction

## Timeline

Construction for the Burrell Drive Pipeline Renewal Project will start in the new few weeks.

The project team estimates it will take **14 months** to complete.

Generally, workdays are **Monday-Friday**, with weekend work scheduled as needed.

Work hours are **7 a.m. to 7 p.m.**



# CONSTRUCTION IMPACTS

| Simon Orta, Inspection Supervisor  
**CAPITAL DELIVERY SERVICES**



[AustinTexas.gov/BurrellPipe](https://AustinTexas.gov/BurrellPipe)



## Impacts

## City Right of Way

Most work will take place in the city's right-of-way (ROW).

**In some cases, the ROW is located 10-15 feet behind the curb, in an area you may consider part of your lawn.**

It may be necessary to remove landscaping or other personal items before your residence can be connected to the new lines.





## Impacts

## Tree Trimming

The contractor may need to trim branches hanging over the city's right-of-way so construction equipment can pass through without damaging the trees.

Trimming decisions are made in consultation with a **professional arborist**.





## Impacts

## Traffic



- At times, traffic lanes may be closed
- You will always have access to your home
- For brief periods, driveway access may be limited.
- Please ask Construction Inspector William Wenzler if you need assistance: 512-567-7220





## Impacts

# Utility Service Interruption

- At some point, your water service may be temporarily interrupted to connect your residence to the new line, but most likely just for a **few hours** on a single day.
- For such a **planned** temporary shut-off, the project team will notify you by posting flyers on doors 48 hours prior to turning off the water.
- **Emergency outages** are possible during construction. An emergency outage occurs if a water line breaks unexpectedly. Crews work as hard as possible to avoid any emergency breaks, but due to the condition of the existing pipes breaks may occur. Emergency breaks are repaired as quickly as possible.



# Questions?

## Please Ask!

### Online

- Submit questions or comments in the Q & A
- Raise your virtual hand if you would like to speak

### Phone

- Press \*9 if you would like to speak
- Once you hear a prompt, press \*6 to unmute

---

## Stay Informed:



### Project Notifications

- Sign up at: [AustinTexas.gov/BurrellPipe](https://AustinTexas.gov/BurrellPipe)
- Scroll to “Communications”





# Contacts

For water and wastewater service issues, contact Austin Water's 24/7 Customer Service line at (512) 972-1000, Select Option 1

## **Nick Burnett**, Project Manager

City of Austin | Capital Delivery Services

**P.** (512) 978-1746

**E.** [Nick.Burnett@austintexas.gov](mailto:Nick.Burnett@austintexas.gov)

## **William Wenzler**, Construction Inspector

City of Austin | Capital Delivery Services

**P.** (512) 567-7220

**E.** [William.Wenzler@austintexas.gov](mailto:William.Wenzler@austintexas.gov)

## **Cynthia Miller**, Public Information Spec. Sr.

Austin Water | Public Information Office

**P.** (512) 972-0268

**E.** [Cynthia.Miller@austintexas.gov](mailto:Cynthia.Miller@austintexas.gov)